

# Configure Ewon Tags as KPI

## APPLICATION NOTE

KB-0278-00 1.3 en-US ENGLISH

---

# Important User Information

## Disclaimer

The information in this document is for informational purposes only. Please inform HMS Industrial Networks of any inaccuracies or omissions found in this document. HMS Industrial Networks disclaims any responsibility or liability for any errors that may appear in this document.

HMS Industrial Networks reserves the right to modify its products in line with its policy of continuous product development. The information in this document shall therefore not be construed as a commitment on the part of HMS Industrial Networks and is subject to change without notice. HMS Industrial Networks makes no commitment to update or keep current the information in this document.

The data, examples and illustrations found in this document are included for illustrative purposes and are only intended to help improve understanding of the functionality and handling of the product. In view of the wide range of possible applications of the product, and because of the many variables and requirements associated with any particular implementation, HMS Industrial Networks cannot assume responsibility or liability for actual use based on the data, examples or illustrations included in this document nor for any damages incurred during installation of the product. Those responsible for the use of the product must acquire sufficient knowledge in order to ensure that the product is used correctly in their specific application and that the application meets all performance and safety requirements including any applicable laws, regulations, codes and standards. Further, HMS Industrial Networks will under no circumstances assume liability or responsibility for any problems that may arise as a result from the use of undocumented features or functional side effects found outside the documented scope of the product. The effects caused by any direct or indirect use of such aspects of the product are undefined and may include e.g. compatibility issues and stability issues.

---

# Table of Contents

Page

<b>1</b>	<b>Preface .....</b>	<b>3</b>
1.1	About This Document .....	3
1.2	Document history .....	3
1.3	Related Documents .....	3
1.4	Trademark Information .....	3
<b>2</b>	<b>Introduction .....</b>	<b>4</b>
<b>3</b>	<b>KPIs Setup .....</b>	<b>5</b>
3.1	Setup Process .....	5
<b>4</b>	<b>Display the KPIs .....</b>	<b>7</b>
4.1	Flexy Homepage .....	7
4.2	M2Web .....	7
4.3	eCatcher Mobile App .....	8
<b>5</b>	<b>Publish KPIs .....</b>	<b>10</b>
5.1	OPC UA .....	10
5.2	Export Block Descriptor .....	10

**This page intentionally left blank**

# 1 Preface

## 1.1 About This Document

This document explains how to set and display tags as KPIs — Key Performance Indicators — in the Ewon Flexy.

For additional related documentation and file downloads, please visit [www.ewon.biz/support](http://www.ewon.biz/support).

## 1.2 Document history

Version	Date	Description
1.0	2018-09-03	First Release.
1.1	2019-03-01	Added: M2Web
1.2	2020-01-31	Changed: General refresh
1.3	2020-05-06	Added: <a href="#">eCatcher Mobile App</a> , p. 8

## 1.3 Related Documents

Document	Author	Document ID
OPC UA Server	HMS	AUG-0064-00
Flexy Family	HMS	RG-0008-00
Export Block Descriptor	HMS	RG-0009-00

## 1.4 Trademark Information

Ewon® is a registered trademark of HMS Industrial Networks SA. All other trademarks mentioned in this document are the property of their respective holders.

## 2 Introduction

The key performance indicators — also known as KPI — allow a very quick overview of the current state of our project, machine, ... at first sight.

Once the Flexy tag, which is the value polled from the PLC register, configured as a KPI, it can be displayed on the Flexy homepage and on the M2Web platform.

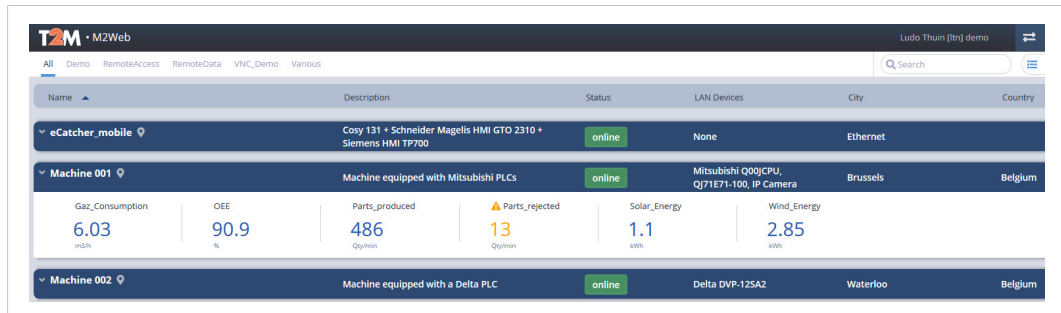


Fig. 1 KPIs in M2Web

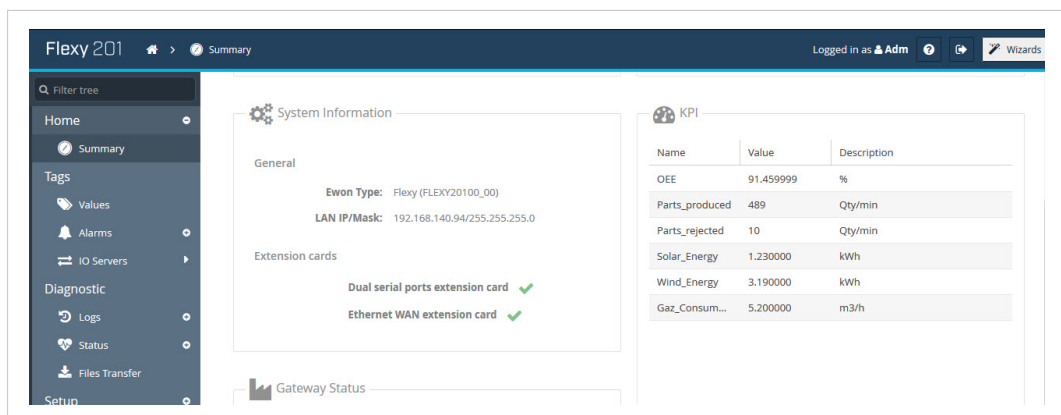


Fig. 2 KPIs in Ewon Flexy

Alternatively the KPIs can also be exported or published to an external device/service using either the OPC UA protocol or the Ewon Flexy Export Block Descriptors.

## 3 KPIs Setup

The Flexy KPIs configuration takes place on the *Tag View / Setup* section.

The number of Flexy tags set as a KPI is limited to 6.

### 3.1 Setup Process

#### 3.1.1 Set a new Tag as KPI

- Log in to the web interface of your Flexy.
- Click the **<Values>** link from the left-side menu, under *Tags*.
- Change the tag mode from **View** to **Setup**.
- Add **<a tag>**.
- Set the tag parameters.
- Make sure to check **Enabled** in the KPI section
- Click on **<Add Tag>**.

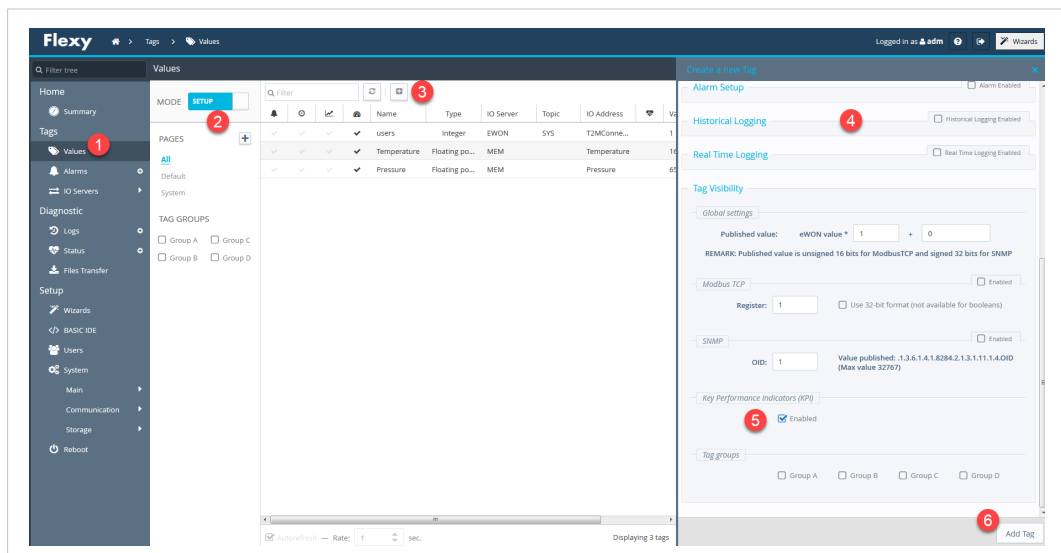


Fig. 3 New tag as KPI

#### 3.1.2 Set an Existing Tag as KPI

If your tag already exists and is listed, you can proceed as follows:

- Log in to the web interface of your Flexy.
- Click the **<Values>** link from the left-side menu, under *Tags*.
- Change the tag mode from **View** to **Setup**.
- Right-click on the tag that needs to be a KPI.
- Make sure to check **Set selection as KPI**.

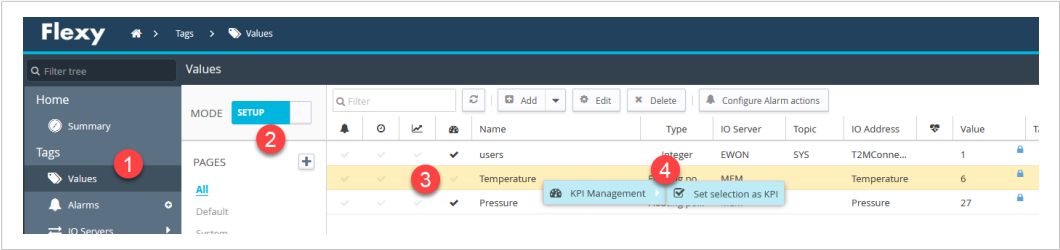


Fig. 4 Set an existing tag as KPI



## 4 Display the KPIs

The KPIs can be shown on different places.

### 4.1 Flexy Homepage

By default, the KPI are displayed on the *Summary* page of your Ewon Flexy.

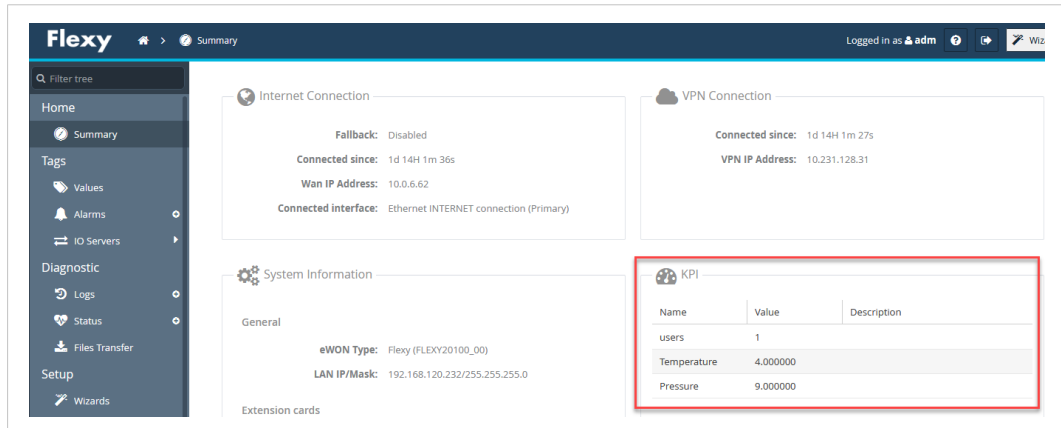


Fig. 5 Flexy dashboard with KPIs

### 4.2 M2Web

You can also display the KPIs on the M2Web platform.

First, you need to configure the Ewon Flexy to send the KPIs to Talk2M:

- Log in to the web interface of your Flexy.
- Go to: **Setup** ► **System** ► **Main** ► **Data Management**.
- Activate the **Live data and KPI's**.

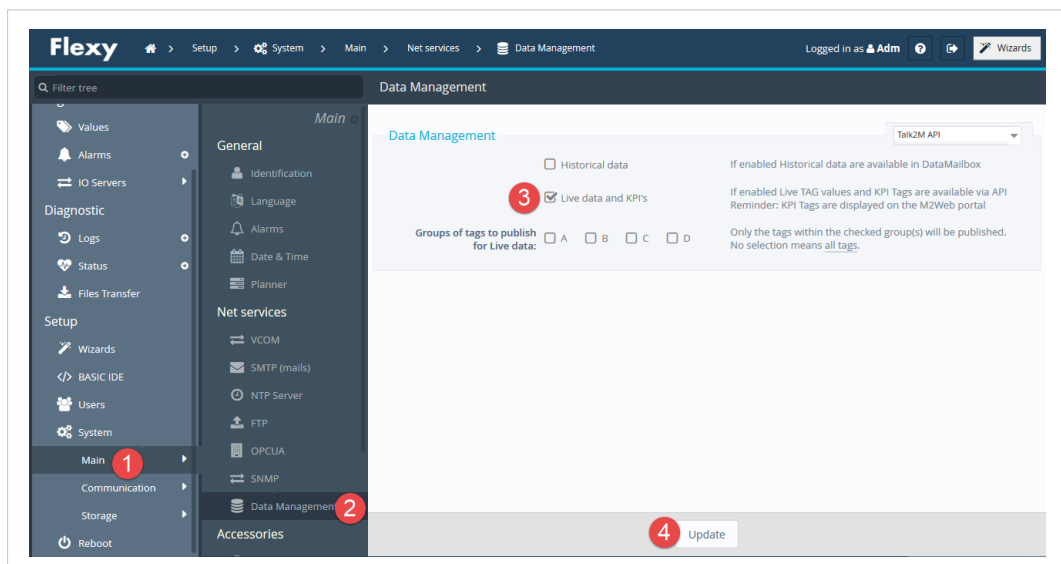


Fig. 6 Activate the KPI in Talk2M

You are now able to see the KPIs on M2Web:

- Open your web browser.

- Browse to <https://m2web.talk2m.com>
- Enter your **Talk2m account name**, your **username** and your **password**.

Once logged in, the KPIs are displayed automatically under your Flexy name.

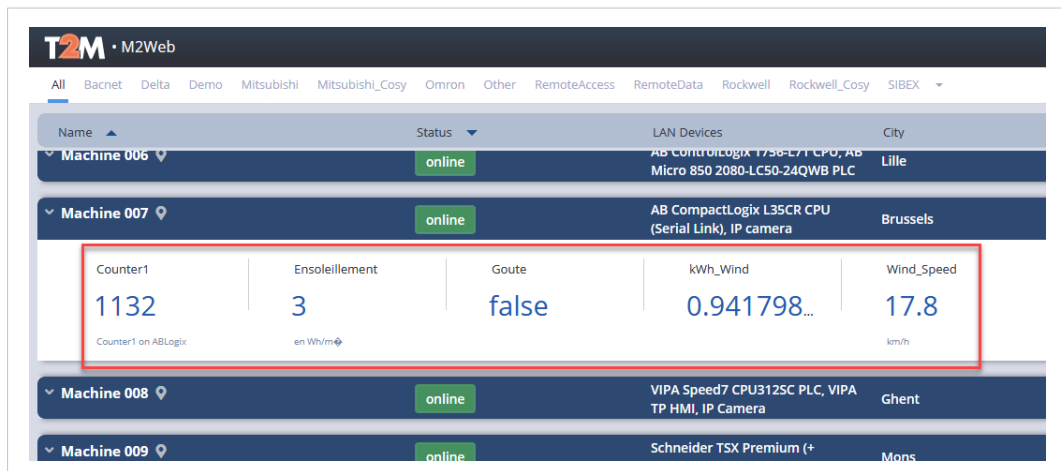


Fig. 7 KPIs in M2Web

If you activate the KPIs on your Ewon Flexy while you were already connected to M2Web, you first need to log out from M2web and login again to see those KPIs.

### 4.3 eCatcher Mobile App

You can also display the KPIs in the eCatcher Mobile App.

First, you need to activate the KPIs in Talk2M:

- Log in to the web interface of your Flexy.
- Go to: **Setup** ► **System** ► **Main** ► **Data Management**.
- Activate the **Live data and KPI's**.

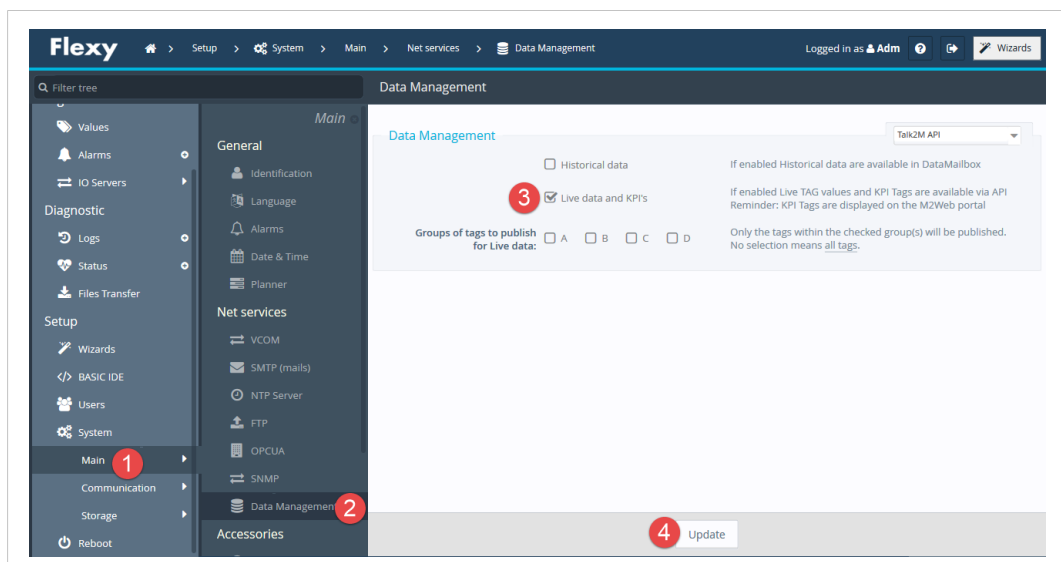


Fig. 8 Activate the KPI in Talk2M

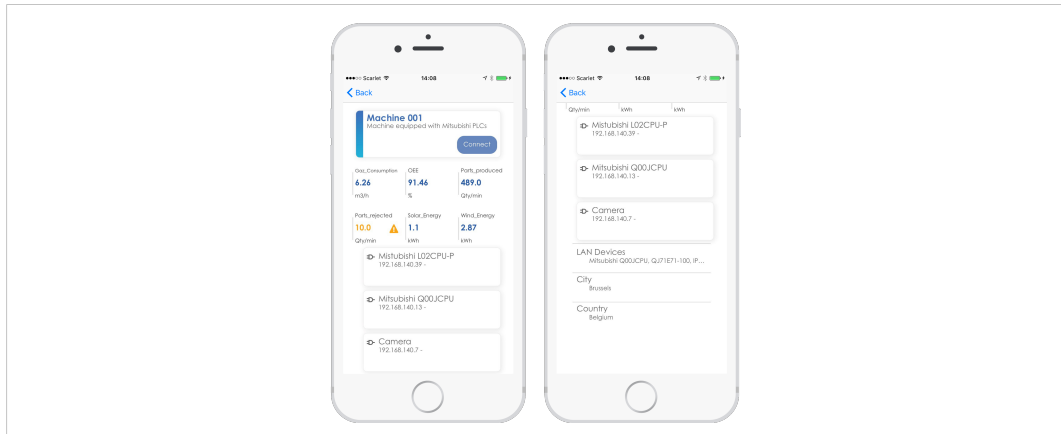
Then, you need to connect to your Talk2M account through the eCatcher mobile app to visualize the KPIs.

The eCatcher Mobile App can be downloaded on the [Apple® AppStore](#) or on the [Google® Play](#).

Once the application available on your mobile device, proceed as follows:

1. Open the eCatcher Mobile app on your mobile device.
2. Enter your **account name**, your **username** and your **password**.
3. Enter a PIN code for easy (re)login if you checked the **<Keep me logged in>** bo in the previous step.
4. Tap on the Ewon Flexy you wish to see the KPIs.

Once in the details of your Flexy, you see, among other information, the KPIs.



**Fig. 9** KPIs displayed in eCatcher Mobile App



*The alarms linked to KPIs are already shown on the main view of the eCatcher Mobile App under the form of a warning icon. If no warning icon is displayed, this means that none of the KPIs is in alarm mode.*

## 5 Publish KPIs

### 5.1 OPC UA

Your Ewon Flexy is able to act as an OPC UA server and so, publish its tags — and KPIs — to an OPC UA client.

If you wish to learn more about OPC UA export and KPIs, please refer to OPC UA Server document from [Related Documents, p. 3](#).

### 5.2 Export Block Descriptor

You can use the Export Block Descriptor also known as EBD to publish the KPIs tags in a custom script.

The following syntax is applied:

- The KPIs data type: \$dtKPI
- The formats: \$ftJ (JSON), \$ftH (HTML), \$ftT (TXT).

**Example 1:** Retrieve a KPI tag through EBD

```
http://EWON_IP/rcgi.binParamForm?AST_Param=$dtKPI$ftJ$fn
```

You can find more info on EBD in the Export Block Descriptor from the [Related Documents, p. 3](#).

**This page intentionally left blank**

